

## Activity

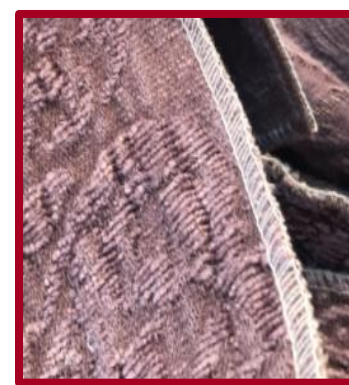
- ❖ Design and creation of fabrics for women's ready-to-wear clothes
- ❖ The activity is in decline but can be redeveloped through a new strategy or integrated into an existing structure (synergies).

## Location

- ❖ Strategic location, focused on the French markets and at the centre of major European routes
- ❖ Global network of agents, strong representation in Europe

## Key elements

- ❖ Turnover > 3,700 K €, downward trend
- ❖ Stock 30/09/20 : +/- 2.000 k €
- ❖ Storage hall: 2,200m<sup>2</sup> with pallet racking
- ❖ Staff: 5 workers (3 storekeepers - 2 sampling) and 3.5 employees



## Structure of the sale

- ❖ Preferred scenario : asset sale including stock
- ❖ Staff is part of the transaction
- ❖ The building is not included in the scope of the sale so as not to make the transaction more burdensome.

### Contact persons :

**Tanguy della Faille**

+32.494.57.39.27

[tanguy.della.faille@fb-transmission.com](mailto:tanguy.della.faille@fb-transmission.com)

**Stéphanie Vanlier**

+32.479.68.24.06

[stephanie.vanlier@fb-transmission.com](mailto:stephanie.vanlier@fb-transmission.com)